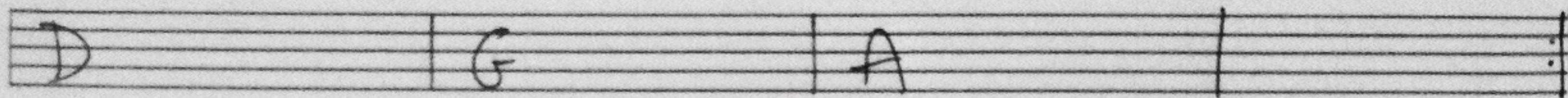
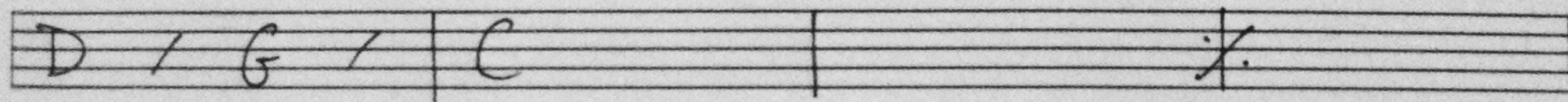
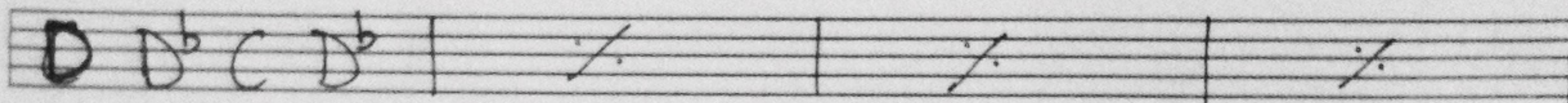


# TOO MUCH TOO YOUNG

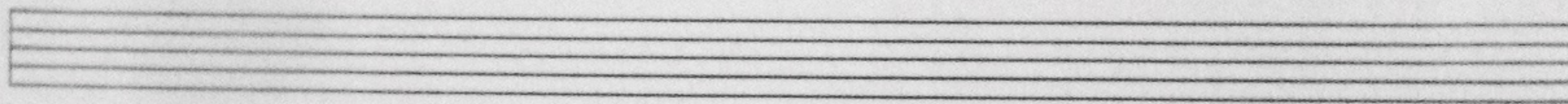
VERSE



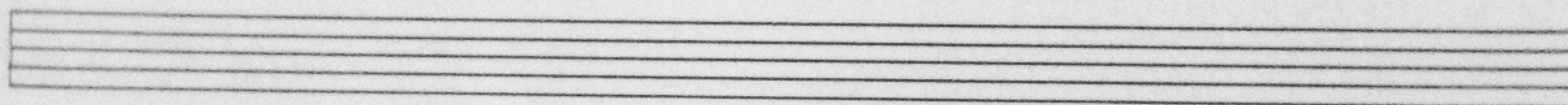
BRIDGE



VERSE

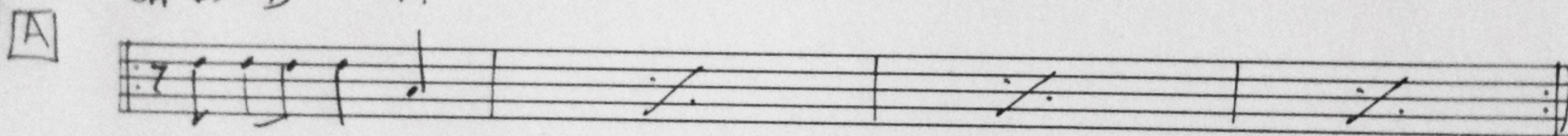


BRIDGE (8 BARS)

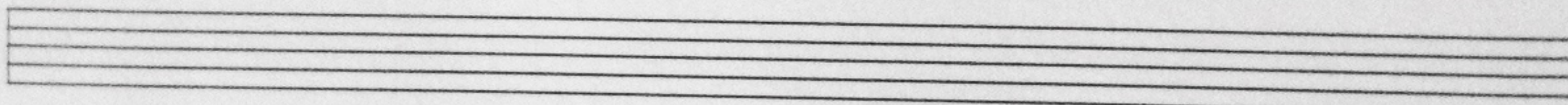


STABS

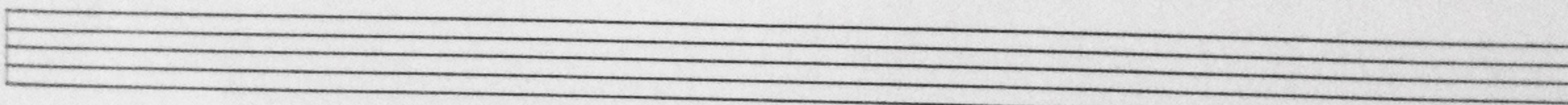
CHORDS D A



VERSE

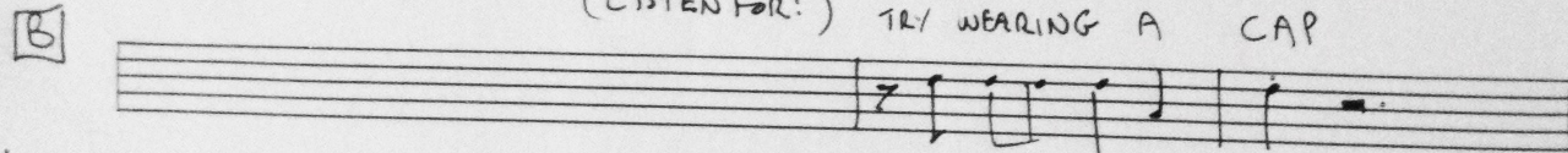


BRIDGE (8 BARS)

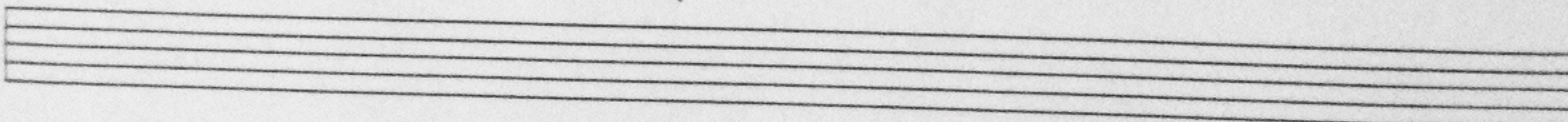


STABS

(LISTEN FOR:) TRY WEARING A CAP



1/2 TIME REGGAE VERSE X 4



BRIDGE (x8)

STABS [B]