

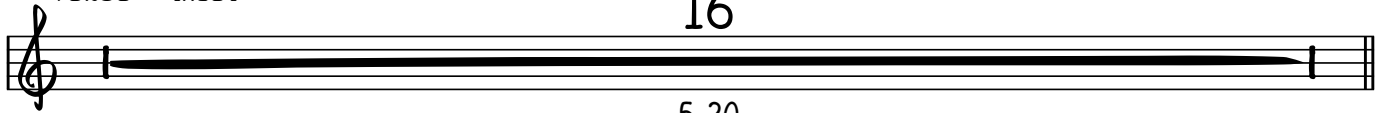
SWEET HOME ALABAMA

REPEAT X 4 (PLAY ON 3&4)

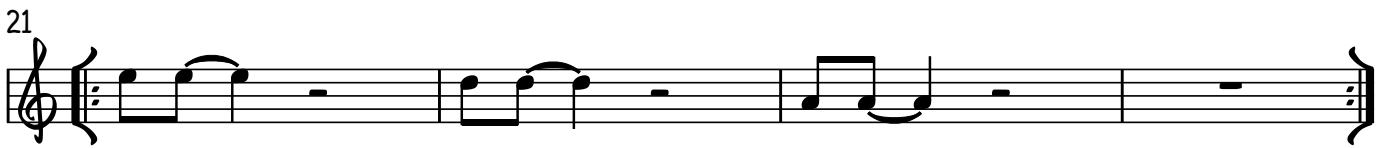


VERSE - TACET

16

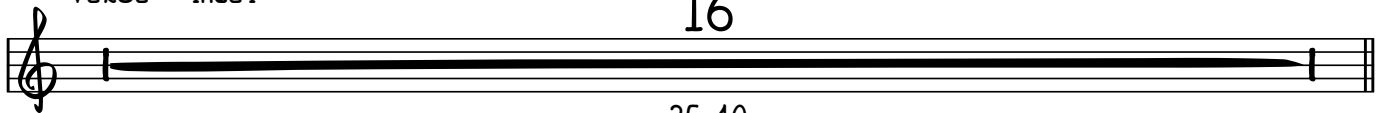


5-20



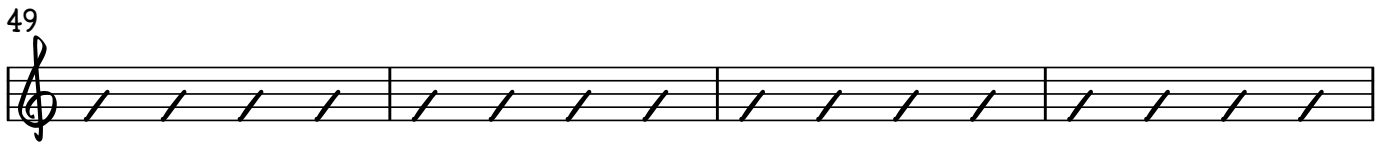
VERSE - TACET

16



25-40

41 CHORUS - BV'S



2

VERSE - TACET

16

A musical staff in treble clef with a long horizontal line spanning the entire staff, indicating a 16-measure tacet section.

61-76

77 CHORUS - BV'S

A musical staff in treble clef with diagonal slashes across the staff, indicating a 16-measure chorus section.

GUITAR SOLO

16

A musical staff in treble clef with a long horizontal line spanning the entire staff, indicating a 16-measure guitar solo section.

78-93

94

E

D

A

A musical staff in treble clef with diagonal slashes across the staff. Above the staff, the letters E, D, and A are positioned over the first, second, and third measures respectively.

98

E

D

A

A musical staff in treble clef with diagonal slashes across the staff. Above the staff, the letters E, D, and A are positioned over the first, second, and third measures respectively.

102

E

D

A

A musical staff in treble clef with diagonal slashes across the staff. Above the staff, the letters E, D, and A are positioned over the first, second, and third measures respectively.

106

E

D

A

A musical staff in treble clef with diagonal slashes across the staff. Above the staff, the letters E, D, and A are positioned over the first, second, and third measures respectively.

110

A musical staff in treble clef with notes and rests. The first measure has a quarter note G4, a quarter note A4, and a quarter note B4. The second measure has a quarter note G4, a quarter note A4, and a quarter note B4. The third measure has a quarter note G4, a quarter note A4, and a quarter note B4. The fourth measure has a quarter note G4, a quarter note A4, and a quarter note B4.

VERSE - TACET

16

CHORUS - BV'S TIL END

A musical staff in treble clef with a long horizontal line spanning the first 16 measures, followed by diagonal slashes for the remaining measures.

114-129